

RESEARCH ARTICLE

Open Access

# Is impaired energy regulation the core of the metabolic syndrome in various ethnic groups of the USA and Taiwan?

Mark L Wahlqvist\*<sup>1</sup>, Hsing-Yi Chang<sup>1</sup>, Chu-Chih Chen<sup>2</sup>, Chih-Cheng Hsu<sup>1</sup>, Wan-Chi Chang<sup>2</sup>, Wuan-Szu Wang<sup>2</sup> and Chao A Hsiung<sup>2</sup>

## Abstract

**Background:** The metabolic syndrome (MetS) concept is widely used in public health and clinical settings without an agreed pathophysiology. We have re-examined the MetS in terms of body fuels, so as to provide a coherent cross-cultural pathogenesis.

**Methods:** National Health and Nutrition Examination Survey (NHANES 2001-2) with  $n = 2254$  and Taiwanese National Health Interview Survey (NHIS) sub-set for hypertension, hyperglycemia and hyperlipidemia assessment (TwSHHH 2002),  $n = 5786$ , were used to compare different ethnicities according to NCEP-ATPIII (NCEP-tw) criteria for METS. Exploratory factor analysis (EFA) using principal components (PC) was employed to differentiate and unify MetS components across four ethnicities, gender, age-strata, and urban-rural settings.

**Results:** The first two factors from the PC analysis (PCA) accounted for from 55.2% (non-Hispanic white) to 63.7% (Taiwanese) of the variance. Rotated factor loadings showed that the six MetS components provided three clusters: the impaired energy regulation (IER) components (waist circumference, WC, fasting triglycerides, TG, and fasting plasma glucose, FPG), systolic and diastolic blood pressures (BPs), and HDL-cholesterol, where the IER components accounted for 25-26% of total variance of MetS components. For the three US ethnic subgroups, factor 1 was mainly determined by IER and HDL-cholesterol, and factor 2 was related to the BP components. For Taiwanese, IER was determinant for both factors, and BPs and HDL-cholesterol were related to factors 1 and 2 respectively.

**Conclusions:** There is a MetS core which unifies populations. It comprises WC, TG and FPG as a core, IER, which may be expressed and modulated in various second order ways.

## Background

The metabolic syndrome (MetS) was conceptualized on the basis that a cluster of metabolic phenomena could be observed in those prone to cardiovascular disease ahead of frank diabetes. It combined features of possible pathogenesis with risk evaluation. Its definition has been in evolution, but those currently used include that of the International Diabetes Federation (IDF) in 2005 [1,2] and the joint NHLB (National Heart Lung and Blood) Institute/AHA (American Heart Association) definition of 2004 [3], based on the NCEP-ATP III (National Choles-

terol Education Program-Adult Treatment Panel III) [4]. The latter has also been modified in Taiwan as NCEP-tw [5]. Both clinical and public health utility have been in mind. However, a 'syndrome' is usually the way in which clinicians articulate what they observe in patients as a set of symptoms and signs, but where etiology or pathogenesis is uncertain. The field of enquiry into the MetS has grown rapidly without settling the matter of the syndrome being a coherent disorder or disease for clinicians or, for public health workers, an entity with 'inputs' and scope for prevention and with 'outputs' in monitoring and surveillance. Despite these limitations, Japanese health authorities have recently embarked on a national program to encourage citizens to have their MetS assessed and to engage in rigorous efforts to 'normalize' it. Unfor-

\* Correspondence: profmlw@nhri.org.tw

<sup>1</sup> Division of Health Policy Research and Development, Institute of Population Health Sciences, National Health Research Institutes, No. 35, Keyan Road, Zhunan, Miaoli County 35053, Taiwan

Full list of author information is available at the end of the article

tunately, definitions differ in different places by 'cut-off' points rather than continua; the basis of these 'cut-offs' is rarely on the basis of all-cause morbidity or mortality; and the relationship of measurements like waist circumference to underlying anatomy not well-characterized. Interestingly, in Japan, imaging techniques have allowed waist circumference to be related to intra-abdominal fat so that the usual gender acceptance of a greater girth for men than women is reversed [6].

There have been efforts to create a unified explanatory model for this syndrome. The best known of these is that the MetS is a disorder of insulin sensitivity i.e. basically 'insulin resistance' and its sequelae, however it may be caused, as suggested by the IDF [1].

It could be argued that the anatomico-physiological basis of the syndrome is in the splanchnic region [7] with disordered energy metabolism [8]. This region has a portal circulation which links the venous drainage of the gut, omental fat, pancreas and spleen to the liver which, in turn, drains into the systemic venous system (the inferior vena cava). It constitutes the metabolic focus for regulation of energy balance, albeit with neuro-endocrine control, and accounts for some of the MetS variables while other variables are a consequence of this disorder [9]. Omental fat (which contributes to abdominal or waist circumference) represents a very metabolically active site for fat storage with a free fatty acid (FFA) flux which acts a regulator of hepatic gluconeogenesis [10] and of hepatic triglyceride (TG) and its very low density lipoprotein (VLDL) TG synthesis [11]. The major function of VLDL TG is to transport energy to peripheral tissues [12]. FFA play a role at the periphery as well in regulating glucose uptake and may be as potent as insulin, but in the reverse direction [13]. Thus, waist circumference as a surrogate for omental fat and FFA flux, serum triglycerides and fasting glucose (representing nocturnal hepatic gluconeogenesis) could serve as a composite index of energy metabolism or its disorders. There is, nevertheless, debate about whether waist circumference adds any additional value to the assessment of body fatness by use of BMI (body mass index) [14], yet the distribution of body fat is relevant to the pathogenesis of various clinical disorders, notably diabetes and cardiovascular disease and, in turn, to mortality although under review by some authors [15]. In the evaluation of the pathology of fat distribution, it is a consideration as to what extent WC represents visceral (elemental) fat [16], which is the metabolically relevant fat in the splanchnic region.

The MetS and energy dysmetabolism are modulated by a number of factors including the psycho-social [9,17] and environmental; locality [18]; food systems; physical activity patterns, biological rhythms (sleep, leisure and work, and sunlight exposure which affects vitamin D status) and pollutants [12]. Their relevant consequences

include inflammatory [19-21], and vascular pathways [21].

There are often striking differences in the presentations of the MetS in Western and Eastern populations. We have taken advantage of such differences between the USA and Taiwan to test for hypothesis generation. In the case of the USA, we have used the National Health and Examination Survey (NHANES) of 2001-2002 data [22] and in the case of Taiwan, we have used a sub-set of the Taiwanese Health Survey, the "Taiwan Three High Prevalence Survey on Hypertension, Hyperglycemia, and Hyperlipidemia" (TwSHHH) of 2002 [23].

Exploratory factor analysis (EFA) has been used for hypothesis generation. It is a multivariate correlation method to reduce a number of inter-correlated variables into smaller sets of factors with less or no association; it has been applied to study the clustering of metabolic abnormalities that contribute to the metabolic syndrome [18,20,24,25]. Here we have used EFA to differentiate major factors derived from the six components of the MetS as continuous variables. A single factor structure or multi-factorial structure can suggest a common or heterogeneous pathogenetic background, respectively, as underlying the clinical manifestations of the syndrome [25]. We sought invariance in clustering patterns of the estimated factor loadings (or communalities) across the four ethnic subgroups. Specifically, we tested the proposition that there is a core to the metabolic syndrome which reflects energy dysregulation. This would manifest as at least one factor which could describe energy storage and transport, possibly by way of abdominal fatness for storage and as a dynamic source of FFA for energy transport along with both fasting glucose and triglycerides as substrates too.

## Methods

### Subjects and measurements

The study was approved by the Institutional Review Board (ethics committee) of the NHRI (National Health Research Institutes) of Taiwan.

Two datasets, one from each of Taiwan and the US were used for this study. The Taiwan data came from the Taiwanese Survey on Hypertension, Hyperglycemia, and Hyperlipidemia (TwSHHH) in year 2002 [23], a subset of the national health interview survey (NHIS) conducted in 2001 [26]. Community-based subjects, aged 17-91 years were identified through the national household registry. There were no exclusions on health grounds, but residential institutions were not included in the sampling frame as the study was community based. However, those with missing or biologically implausible data were not included in the analysis. NHIS incorporated a multistage stratified systematic sampling scheme. It first divided 359 townships/districts of Taiwan into seven strata according

to their geographical location and degree of urbanization or rural location. Townships or districts in each stratum were selected with a selection probability proportional to their size (PPS). In each selected township/district, *lins* (the smallest administrative unit) were selected with PPS. Four households were selected randomly from each selected *lin*, with each member of these households to be interviewed. The response rate for households was 91.1%, and it was 94.2% for individuals [24]. The design resulted in an equal probability sample. No sampling weights were required in the estimation. Anthropometric measurements were taken. Subjects were asked to avoid walking, running or lifting heavy things 30 minutes before blood pressures were measured. After they sat down for measuring blood pressures, they were asked to rest for 5 to 10 minutes. Two blood pressure readings were made with a calibrated mercury sphygmomanometer in the sitting position using a binaural stethoscope and simultaneous readings by 2 observers who recorded the findings independently. Readings were accepted only if they did not differ by more than 2 mmHg. If the 2 measurements separated in time differed by more than 10 mmHg, a third reading was obtained. The average of the closest 2 readings was used. Subjects were instructed to fast for 8 hours or more before the blood samples were taken. NaF plasma was collected for fasting glucose analysis, and serum was collected for measurements of lipids. Blood samples were transported at -10°C in dry ice to the central laboratory, stored at -20°C and analyzed within 2 weeks. Fasting plasma glucose (FPG) was analyzed by the glucose oxidase method using an automated system (Vitros 550/750, Ortho-Clinical Diagnostic Inc., Johnson and Johnson Company, Rochester, NY, USA).

The other dataset was the NHANES which comes from interviews, examinations, and laboratory tests based on blood and urine samples <http://www.cdc.gov/nchs/nhanes.htm> [22]. The 2001-2002 data were used for this study. Subjects were 18-85 years old, community-based, irrespective of health status, similar to the Taiwanese sample. Anthropometric, blood pressure recording, blood sampling and analyte measurements were subject to similar standardisation as used in Taiwan. In the case of BP, three and sometimes 4 BP determinations (systolic and diastolic) were taken in a mobile examination center (MEC) and during home examinations on all eligible individuals using a mercury sphygmomanometer; two physicians (MEC setting) and 2 health technologists (Home Examination setting) were trained to collect NHANES BP data [22].

As with the Taiwanese sample, when data were missing, or biologically implausible, the subject was not included in the analyses.

When examining the relationships between measurements, sampling weights were not necessary

## Statistical Analysis

Descriptive statistics, such as mean and standard deviation, were used to present the characteristics of the study populations. An EFA using the method of principal components [27] was applied to assess the factor structure of the six components: WC, FPG, TG, HDL, SBP, and DBP of the metabolic syndrome for all four ethnic groups: Taiwanese, non-Hispanic white, non-Hispanic black, and Mexican-American. Among the first two factors from principal component analysis (PCA), relative proportions of the total variance of the six standardized MetS components were estimated using the procedure PROC FACTOR from SAS software (SAS version 9.1. 2002; SAS Institute, Cary NC, USA). The factor loadings were then rotated using the *varimax* criterion for the clustering patterns of the six components from the first two factors for each of the ethnic groups. To assess the sensitivity of the estimated proportions, for each of the four ethnic groups, the EFA procedure was applied repeatedly for their communalities in each of the one thousand resampled datasets by bootstrapping [28]. The 95% confidence interval (CI) of the clustered components was then obtained by taking the 25<sup>th</sup> and 975<sup>th</sup> millile of the sorted added-up communalities of the corresponding clustered components among one thousand bootstrapped datasets.

## Results

### Descriptive statistics

The average ages and the metabolic components for the several ethnic groups are presented in Table 1. The average age of the non-Hispanic whites was 50.3 ± 20 years, whereas those of other ethnic groups was around 40 years old. Taiwanese had lower values for most of the components, except diastolic blood pressure and HDL (which were higher). That resulted in lower prevalence of abnormality for each component as well as for the metabolic syndrome than in other ethnic groups (Table 2). It is also noteworthy that Taiwanese subjects were the shortest and had the lowest Body Mass Indices (BMIs).

In regard to urbanization, the analysis was only possible for Taiwanese (Table 1). There were few biologically meaningful differences in the subject characteristics, although, large sample sizes allowed significance to be seen with some minor differences. In general, rural subjects had less satisfactory MetS related biological characteristics. Medication use for hypertension, diabetes and hyperlipidaemia did not differ between the 2 settings or by gender.

We have not shown the findings for physical activity or alcohol consumption because of the high frequencies (>20%) of missing values in NHANES. However, in Taiwan, this was not the case (missing values < 5%).

Pearson correlations are shown in Table 3. Although not a MetS component, we have included BMI as well as

**Table 1: Comparisons of the MetS components of Taiwanese (urban and rural) and the different US ethnic groups**

| Variables                 | Ethnic Groups   |                  |                 |                        |                       |                      | P-value† |
|---------------------------|-----------------|------------------|-----------------|------------------------|-----------------------|----------------------|----------|
|                           | Taiwanese       |                  |                 | US non-Hispanic whites | US non-Hispanic Black | US Mexican Americans |          |
|                           | Urban           | Rural            | All             |                        |                       |                      |          |
| <b>All</b>                | <b>N = 3650</b> | <b>N = 2136</b>  | <b>N = 5786</b> | <b>N = 1248</b>        | <b>N = 457</b>        | <b>N = 549</b>       |          |
| Age (years)               | 42.3 ± 15.4     | 42.9 ± 16.4      | 42.5 ± 15.7     | 50.3 ± 20.0            | 40.8 ± 18.0           | 40.5 ± 18.8          | < .0001  |
| WC (cm)                   | 79.4 ± 11.3     | 79.9 ± 11.2      | 79.6 ± 11.3     | 96.7 ± 15.2            | 94.3 ± 17.3           | 95.4 ± 14.2          | < .0001  |
| Glucose (mg/dl)           | 92.5 ± 25.6     | 95.5 ± 29.1 **   | 93.6 ± 27.0     | 102.4 ± 29.0           | 101.7 ± 45.1          | 106.7 ± 37.9         | < .0001  |
| Triglycerides(mg/dl)      | 123.0 ± 79.4    | 132.1 ± 91.1 **  | 126.3 ± 84.0    | 157.4 ± 178.8          | 106.1 ± 69.8          | 156.3 ± 118.4        | < .0001  |
| HDL (mg/dl)               | 56.1 ± 14.8     | 54.5 ± 14.8 **   | 55.5 ± 14.8     | 52.5 ± 16.2            | 53.7 ± 16.3           | 49.4 ± 13.8          | < .0001  |
| LDL (mg/dl)               | 114.7 ± 27.0    | 116.4 ± 26.9 **  | 115.3 ± 27.0    | 122.0 ± 35.6           | 117.6 ± 36.8          | 115.8 ± 33.1         | < .0001  |
| Total Cholesterol(mg/dl)  | 182.7 ± 36.8    | 183.5 ± 36.5     | 183.0 ± 36.7    | 204.1 ± 44.1           | 192.4 ± 43.0          | 195.1 ± 41.0         | < .0001  |
| SBP (mm Hg)               | 113.7 ± 17.4    | 116.4 ± 17.6 **  | 114.7 ± 17.5    | 124.3 ± 20.2           | 125.3 ± 20.6          | 120.2 ± 18.9         | < .0001  |
| DBP (mm Hg)               | 74.5 ± 11.2     | 75.3 ± 11.2 **   | 74.8 ± 11.2     | 71.1 ± 11.4            | 73.5 ± 13.5           | 68.8 ± 11.4          | < .0001  |
| BMI (kg/m <sup>2</sup> )  | 23.1 ± 3.5.     | 23.3 ± 3.7 **    | 23.1 ± 3.6.     | 27.7 ± 5.9             | 28.4 ± 7.0            | 28.0 ± 5.7           | < .0001  |
| Weight (Kg)               | 61.5 ± 11.5     | 61.7 ± 11.7      | 61.5 ± 11.6     | 79.6 ± 19.0            | 82.2 ± 20.2           | 75.1 ± 17.5          | < .0001  |
| Height (cm)               | 162.9 ± 8.1     | 162.3 ± 7.9 **   | 162.6 ± 8.0     | 169.4 ± 10.0           | 170.4 ± 9.8           | 163.7 ± 9.1          | < .0001  |
| HT drug (%)               | 7.5             | 8.1              | 7.7             | 12.3                   | 5.9                   | 6.0                  | < .0001  |
| DM drug (%)               | 3.1             | 3.3              | 3.2             | 5.5                    | 8.1                   | 9.3                  | < .0001  |
| Lipid drug (%)            | 1.7             | 1.6              | 1.7             | 14.9                   | 7.7                   | 8.9                  | < .0001  |
| Current smoker †(%)       | 18.8            | 22.1 **          | 20.0            | 22.1                   | 26.5                  | 21.1                 | 0.0129   |
| <b>Males</b>              | <b>N = 1746</b> | <b>N = 1081</b>  | <b>N = 2827</b> | <b>N = 602</b>         | <b>N = 226</b>        | <b>N = 266</b>       |          |
| Age (years)               | 42.5 ± 16.0     | 44.2 ± 17.0 **   | 43.1 ± 16.4     | 50.5 ± 19.3            | 40.5 ± 17.4           | 40.8 ± 19.1          | < .0001  |
| WC (cm)                   | 84.2 ± 10.7     | 84.4 ± 10.2      | 84.3 ± 10.5     | 100.6 ± 14.0           | 92.2 ± 16.6           | 96.6 ± 13.3          | < .0001  |
| Glucose (mg/dl)           | 93.5 ± 27.4     | 96.5 ± 30.0 **   | 94.6 ± 28.5     | 106.8 ± 33.9           | 102.8 ± 46.8          | 109.9 ± 35.0         | < .0001  |
| Triglycerides(mg/dl)      | 139.1 ± 88.5    | 151.4 ± 103.6 ** | 143.8 ± 94.7    | 172.2 ± 238.3          | 111.0 ± 78.9          | 162.4 ± 138.1        | < .0001  |
| HDL (mg/dl)               | 52.1 ± 14.4     | 50.6 ± 14.7 **   | 51.5 ± 14.6     | 45.5 ± 12.0            | 50.9 ± 14.7           | 44.0 ± 10.7          | < .0001  |
| LDL (mg/dl)               | 116.8 ± 26.7    | 117.2 ± 26.6     | 113.7 ± 27.1    | 122.4 ± 36.0           | 117.1 ± 36.3          | 119.2 ± 34.2         | 0.0010   |
| Total Cholesterol (mg/dl) | 182.6 ± 35.9    | 182.4 ± 36.4     | 183.4 ± 37.2    | 199.7 ± 46.3           | 190.2 ± 43.6          | 192.9 ± 40.1         | < .0001  |
| SBP (mm Hg)               | 117.5 ± 15.9    | 120.7 ± 16.7 **  | 118.9 ± 16.3    | 124.7 ± 17.0           | 127.3 ± 20.0          | 123.0 ± 16.5         | < .0001  |
| DBP (mm Hg)               | 77.7 ± 10.7     | 78.3 ± 11.1      | 77.9 ± 10.9     | 73.0 ± 11.0            | 76.0 ± 13.6           | 69.7 ± 12.1          | < .0001  |
| BMI (kg/m <sup>2</sup> )  | 23.7 ± 3.4      | 23.9 ± 3.4       | 23.7 ± 3.4      | 27.9 ± 5.4             | 26.6 ± 5.7            | 27.6 ± 4.9           | < .0001  |
| Weight (Kg)               | 67.7 ± 10.8     | 67.4 ± 10.7      | 67.6 ± 10.7     | 87.0 ± 17.8            | 84.2 ± 19.3           | 80.0 ± 16.6          | < .0001  |
| Height (cm)               | 168.9 ± 6.1     | 167.8 ± 6.0 **   | 168.4 ± 6.1     | 176.7 ± 7.4            | 177.8 ± 6.9           | 170.0 ± 7.2          | < .0001  |
| HT drug (%)               | 7.6             | 9.2              | 8.2             | 12.5                   | 6.6                   | 5.6                  | 0.0011   |
| DM drug (%)               | 3.6             | 3.6              | 3.6             | 6.1                    | 7.5                   | 9.0                  | < .0001  |
| Lipid drug (%)            | 1.7             | 1.6              | 1.7             | 14.8                   | 8.4                   | 7.5                  | < .0001  |
| Current smoker †(%)       | 36.1            | 41.4             | 38.2            | 24.6                   | 31.6                  | 27.1                 | < .0001  |

**Table 1: Comparisons of the MetS components of Taiwanese (urban and rural) and the different US ethnic groups**

| Females                   | N = 1904     | N = 1055        | N = 2959     | N = 646      | N = 231      | N = 283      |         |
|---------------------------|--------------|-----------------|--------------|--------------|--------------|--------------|---------|
| Age (years)               | 42.1 ± 14.8  | 41.6 ± 15.6     | 41.9 ± 15.0  | 50.1 ± 20.6  | 41.1 ± 18.9  | 40.2 ± 18.5  | < .0001 |
| WC (cm)                   | 74.9 ± 9.9   | 75.3 ± 10.2     | 75.0 ± 10.0  | 93.0 ± 15.4  | 96.2 ± 17.8  | 94.2 ± 14.9  | < .0001 |
| Glucose (mg/dl)           | 91.5 ± 23.8  | 94.4 ± 28.0 **  | 92.6 ± 25.4  | 98.3 ± 22.9  | 100.5 ± 43.4 | 103.8 ± 40.2 | < .0001 |
| Triglycerides (mg/dl)     | 108.2 ± 66.6 | 112.3 ± 70.9    | 109.7 ± 68.2 | 143.6 ± 92.1 | 101.3 ± 59.4 | 150.6 ± 96.1 | < .0001 |
| HDL (mg/dl)               | 59.7 ± 14.2  | 58.5 ± 13.7 **  | 59.2 ± 14.0  | 59.0 ± 17.0  | 56.5 ± 17.4  | 54.4 ± 14.4  | < .0001 |
| LDL (mg/dl)               | 112.7 ± 27.1 | 115.6 ± 27.1 ** | 117.0 ± 26.7 | 121.6 ± 35.2 | 118.1 ± 37.4 | 112.7 ± 31.6 | < .0001 |
| Total Cholesterol (mg/dl) | 182.8 ± 37.6 | 184.6 ± 36.6    | 182.5 ± 36.1 | 208.1 ± 41.7 | 194.5 ± 42.5 | 197.2 ± 41.7 | < .0001 |
| SBP (mm Hg)               | 110.3 ± 17.9 | 112.1 ± 17.5 ** | 110.9 ± 17.8 | 123.9 ± 22.7 | 123.3 ± 21.0 | 117.6 ± 20.6 | < .0001 |
| DBP (mm Hg)               | 71.7 ± 10.8  | 72.3 ± 10.5     | 71.9 ± 10.7  | 69.2 ± 11.4  | 71.0 ± 13.0  | 67.9 ± 10.8  | < .0001 |
| BMI (kg/m <sup>2</sup> )  | 22.5 ± 3.5   | 22.8 ± 4.0      | 22.6 ± 3.7   | 27.4 ± 6.4   | 30.0 ± 7.8   | 28.3 ± 6.3   | < .0001 |
| Weight (Kg)               | 55.7 ± 8.9   | 55.9 ± 9.8      | 55.8 ± 9.2   | 72.6 ± 17.4  | 80.1 ± 20.8  | 70.4 ± 17.0  | < .0001 |
| Height (cm)               | 157.3 ± 5.3  | 156.7 ± 5.2 **  | 157.1 ± 5.3  | 162.6 ± 6.8  | 163.2 ± 6.3  | 157.7 ± 6.2  | < .0001 |
| HT drug (%)               | 7.4          | 7.0             | 7.2          | 12.2         | 5.2          | 6.4          | < .0001 |
| DM drug (%)               | 2.7          | 3.0             | 2.8          | 5.0          | 8.7          | 9.5          | < .0001 |
| Lipid drug (%)            | 1.7          | 1.7             | 1.7          | 15.0         | 6.9          | 10.2         | < .0001 |
| Current smoker †(%)       | 3.0          | 2.2             | 2.7          | 19.7         | 21.7         | 15.5         | < .0001 |

WC: waist circumference; HDL: high-density lipoprotein; LDL: low-density lipoprotein; SBP: systolic blood pressure; DBP: diastolic blood pressure; BMI: body mass index.

† At significant level  $\alpha = 0.05$ ,  $p$ -value < 0.05 was used for ANOVA for differences in means and chi-square test for proportions among four different ethnic groups;  $p$ -value < 0.05\*\* was used for two-sample t-test were used for comparing means and proportions between urban and rural Taiwanese.

‡ LDL is calculated from measured values of total cholesterol, triglycerides, and HDL according to the Friedewald calculation for US NHANES 2001-2002: [LDL] = [total cholesterol] - [HDL] - [triglycerides/5] where all values are expressed in mg/dL. The calculation is valid for triglycerides less than or equal to 400 mg/dL.

‡ Current smokers were considered to subjects who have a life-time smoking experience of  $\geq 100$  cigarettes and currently smoke.

WC because of the interest in the intercorrelation between BMI and WC.

The correlation between BMI and WC is less in Taiwanese ( $r = 0.75$ ) than in US ethnic groups ( $r = 0.88, 0.91$  and  $0.90$  for Non-Hispanic White: NHW; Non-Hispanic Blacks: NHB and Mexican American: MA, respectively). With the exception of blood pressure, the remaining correlations between the metabolic syndrome components are similar for the various ethnic groups.

#### Exploratory factor analysis

For both the TW3HHH and NHANES datasets, all the distributions of the six components were skewed to the left. Therefore, a log-transformation was applied to each of the six components before analysis, so that the component variables were approximately normally distributed. Figure 1a-1d presents the score plots from PCA after rotation of the ethnic groups separately. The data points with similar factor structures were closely located as a cluster whereas those with divergent patterns were located further apart. They were classified according to the position of the corresponding coordinates with respect to the factor axis after rotation. As shown in Fig-

ure 1a-1d, for all the four ethnicity groups, the score plot shows that the data points were clustered into three groups: IER (Impaired Energy Regulation) components (WC, FPG, TG), systolic and diastolic blood pressures (SBP, DBP), and HDL-cholesterol. For the three US ethnic subgroups, factor 1 was mainly determined by the IER components and low HDL-cholesterol, and factor 2 was related to the BPs components; whereas for Taiwanese the IER components were determinant for both factors 1 and 2, and hypertension and HDL-cholesterol were related to factors 1 and 2 respectively (Figure 1e).

In the case of Taiwan, the IER cluster was closer to the BP cluster than in the US ethnic groups.

Figure 2 illustrates the total variance explained by the first two factors and relative variance compositions of the IER components, BPs, and HDL-cholesterol across the four ethnic groups, with specific percentages given in Table 4. The first two factors accounted for 55.2% (Caucasian) to 63.7% (Taiwanese) of the total variances. As shown in figure 2, the proportions of variance explained by the IER components were relatively homogeneous for different ethnic subgroups, with absolute percentages

ranging from 24.6% (Taiwanese) to 25.9% (non-Hispanic black) and relative percentages ranging from 38.5% to 45.8%. However, the proportions of variance explained by BPs and HDL-cholesterol were somewhat heterogeneous. For example, the absolute percentages of hypertension ranged between 20.1% (non-Hispanic white) and 26.8% (Taiwanese). The invariance pattern of the IER components was similar across the four ethnic subgroups when stratified by gender. However, males had slightly lower proportions of the IER components than females for all the four ethnic groups.

In contrast, females tended to have lower communalities in BPs than males except for Mexican-Americans, for whom the females had substantially higher communality. The 95% CIs obtained from bootstrap resamplings were reasonably narrow and homogeneous for all the clustered components across the four ethnic groups as well as the males and females separately, with Taiwanese having the narrowest bounds possibly due to the relatively large sample size (Figure 3, Table 4).

Table 5 shows the subject comparisons for Taiwanese by age strata (< 35, 35-65, and  $\geq 65$ ), by gender and by urban-rural locality. There are generally unfavourable differences for younger and middle-aged rural compared with urban subject, but not for elderly people. Medication usage is greater for the elderly, whether urban or rural, as expected. Smoking is markedly less for women than men in all age groups and in both urban and rural settings. When considered by gender, there are no differences between urban and rural dwellers for smoking.

In Figure 3 we show the absolute cumulative variances (Communality Estimates) for MetS component clusters obtained from factor analysis where the cut-points for factor loadings were 0.40. These correspond to the age, gender and locality settings represented in Table 5. Two MetS clusters (WC, FPG, TG and SBP with DBP) and HDL together explain about 50-60% of the communality estimates for the MetS, and the IER cluster explains about 25%, as these clusters do when the analyses are by ethnicity as shown in Table 4 and in figures 1 and 2. The exception is that of urban women where 3 factors emerge (data not shown) and the IER cluster does so more strongly (32.5% of the communality estimates compared with 25.8% for the rural women); in the case of urban women, the same 2 collective clusters and HDL explain more than 70% of the communality estimates for the MetS. These findings indicate that an IER core of the MetS components exists irrespective of ethnicity, gender, age or locality, although more pronounced for older urban women.

The factor analysis for elderly Taiwanese ( $\geq 65$  y) is similar to a factor analysis of the MetS in elderly Swedes ( $\geq 75$  y) [29] where a core of WC, FPG, TG and Inverse HDL constituted a Metabolic Factor and, with a BP Factor, accounted for most of the variance (data not shown).

Although the communality estimates are not available to us for the Swedish elderly who were located in a provincial setting, we can say that elderly men in Sweden and Taiwan have comparable factor loadings for the various MetS components [29] Rural Taiwanese women, but not Urban Taiwanese women, had a Metabolic factor and a BP factor like provincial Swedish women.

## Discussion

### Consistent component core

This study utilized factor analysis to discover a consistent component core as a likely core of the metabolic syndrome. We found a similar pattern in different ethnic groups. It confirms our hypothesis about IER. Wijndaele et al. [30] also used factor analysis to construct scores for the metabolic syndrome. They obtained two factors based on the components of the metabolic syndrome. They then multiplied each component by factor loading and weighed the sum by the relative contribution in the proportion of variance explained by each factor. They called it the "continuous metabolic syndrome risk score". Later on, they used this score as a dependent variable and investigated the effects of sedentary behaviors and leisure time physical activity on it [31]. They did not investigate the clustering nature of each component in detail. Instead, they used the score directly. We also obtained two factors for different ethnic groups. With an in depth examination of the clustering nature of each component, we found that there was a component aggregate in the metabolic syndrome, which we have referred to as IER, a core to the conventional MetS.

Öhrvik et al. [29] have explored factor analysis of the MetS in an elderly Swedish population. They used the reciprocal of HDL and log transformation of FPG and TG and found two factors. A metabolic factor with our three IER components and a BP factor in men and women. We have analyzed the elderly Taiwanese data in the same way and find similar results for men, and for rural women, but not for urban women, who seem to have enhanced the 'IER' core seen in the younger population in its various settings and have 3 rather than 2 factors (Figure 3) [29]. We find this age, gender and urban-rural differential of interest since it may indicate a biological survival strategy or, conversely, be a signal of potential demise, or just relate to ageing in some way, depending on what comes first and its predictive power for future health. This is a question we expect to pursue in future data-linkage studies on morbidity and mortality outcomes.

At present we can say that ethnicity, and urbanisation and, with the exception of elderly women in urban settings, display a common core to the MetS which could reflect IER. Where this does not apply may provide clues to the pathogenesis and consequences of the MetS. An example of this could be the report of Malan et al (2008)

**Table 2: Weighted prevalence of MetS and component risk factors by sex and ethnicity for Taiwan 2002TwHHH and US NHANES 2001-2002**

| Variables                   | Ethnic Groups           |                                  |                                 |                                |
|-----------------------------|-------------------------|----------------------------------|---------------------------------|--------------------------------|
|                             | Taiwanese<br>(N = 5786) | Non-Hispanic White<br>(N = 1077) | Non-Hispanic Black<br>(N = 381) | Mexican- American<br>(N = 461) |
| <b>All</b>                  |                         |                                  |                                 |                                |
| Abdominal Obesity (NCEP)* ¶ | 29.8                    | 48.5                             | 46.9                            | 43.1                           |
| Abdominal Obesity (IDF) § ¶ | 29.8                    | 71.1                             | 62.6                            | 67.8                           |
| High Blood Pressure**       | 29.8                    | 39.7                             | 45.8                            | 21.7                           |
| Low HDL†                    | 22.8                    | 33.7                             | 32.0                            | 41.2                           |
| High Glucose‡               | 10.0                    | 36.2                             | 26.7                            | 42.3                           |
| High Triglycerides¥         | 26.3                    | 34.9                             | 18.8                            | 34.8                           |
| NCEP MetS                   | 10.8                    | 34.8                             | 28.4                            | 32.8                           |
| IDF MetS                    | 8.6                     | 39.9                             | 31.5                            | 35.2                           |
| <b>Males</b>                | (N = 2827)              | (N = 555)                        | (N = 196)                       | (N = 249)                      |
| Abdominal Obesity (NCEP)* ¶ | 29.2                    | 39.9                             | 29.3                            | 34.0                           |
| Abdominal Obesity (IDF) § ¶ | 29.2                    | 67.1                             | 49.6                            | 63.0                           |
| High Blood Pressure**       | 35.2                    | 41.9                             | 55.3                            | 38.5                           |
| Low HDL†                    | 21.1                    | 32.9                             | 21.7                            | 34.6                           |
| High Glucose‡               | 10.5                    | 46.1                             | 31.3                            | 60.6                           |
| High Triglycerides¥         | 33.2                    | 39.0                             | 23.5                            | 43.0                           |
| NCEP MetS                   | 11.2                    | 36.7                             | 26.6                            | 39.5                           |
| IDF MetS                    | 9.2                     | 44.6                             | 29.1                            | 42.5                           |
| <b>Females</b>              | (N = 2959)              | (N = 522)                        | (N = 185)                       | (N = 212)                      |
| Abdominal Obesity (NCEP)* ¶ | 31.2                    | 51.8                             | 67.5                            | 66.0                           |
| Abdominal Obesity (IDF) § ¶ | 31.2                    | 72.2                             | 83.2                            | 86.1                           |
| High Blood Pressure**       | 25.0                    | 36.1                             | 50.3                            | 32.4                           |
| Low HDL†                    | 24.9                    | 35.1                             | 44.1                            | 50.0                           |
| High Glucose‡               | 9.7                     | 25.3                             | 32.0                            | 41.1                           |
| High Triglycerides¥         | 20.5                    | 27.8                             | 16.6                            | 31.6                           |
| NCEP MetS                   | 11.0                    | 30.0                             | 37.5                            | 45.7                           |
| IDF MetS                    | 8.3                     | 33.2                             | 41.1                            | 47.0                           |

Abbreviations are as footnoted in Table 1.

¶ Males waist circumference  $\geq 90$  cm; females waist circumference  $\geq 80$  cm for Taiwanese population;

\* NCEP: males waist circumference  $> 102$  cm; female waist circumference  $> 88$  cm;

§ IDF: males waist circumference  $\geq 94$  cm; females waist circumference  $\geq 80$  cm

\*\* Systolic  $\geq 130$  mmHg or diastolic  $\geq 85$  mmHg or on anti-hypertensive medication

† Males fasting HDL  $< 40$  mg/dL; females fasting HDL  $< 50$  mg/dL

‡ Fasting glucose  $\geq 110$  mg/dL or on glucose-lowering medication

¥ Triglycerides  $\geq 150$  (mg/dl).

[18] that the expression of the MetS syndrome by setting (urban-rural) may depend on an individual's coping skills.

#### Unifying capacity of IER

Various attempts have been made to provide a mechanistic construct on the many observations of the MetS cluster of 6 components with insulin resistance being the earliest and most preferred. For example, Alberti and col-

leagues recommended one single set of cut points for all components except waist circumference [32]. Nevertheless, it has begged the question as to what is fundamentally going on in people who manifest it, especially in regard to its genotypic, phenotypic or, more recently, its epigenetic basis. By the conceptual separation of IER from the rest of the MetS, it is possible to consider its

**Table 3: Pearson Correlations of the MetS Components for Taiwanese, Non- Hispanic White, Non-Hispanic Blacks and Mexican-Americans**

| Variable | Ethnic Groups       | WC    | HDL    | TG     | FPG    | SBP    | DBP    |
|----------|---------------------|-------|--------|--------|--------|--------|--------|
| BMI      | Taiwanese           | 0.75* | -0.20* | 0.41*  | 0.23*  | 0.36*  | 0.39*  |
|          | Rural               | 0.75* | -0.28* | 0.47*  | 0.28*  | 0.46*  | 0.45*  |
|          | Urban               | 0.75* | -0.24* | 0.45*  | 0.27*  | 0.41*  | 0.43*  |
|          | Non- Hispanic White | 0.88* | -0.29* | 0.30*  | 0.24*  | 0.14*  | 0.10†  |
|          | Non-Hispanic Blacks | 0.91* | -0.21* | 0.32*  | 0.24*  | 0.25*  | 0.11‡  |
|          | Mexican-Americans   | 0.90* | -0.23* | 0.37*  | 0.20*  | 0.21*  | 0.19*  |
| WC       | Taiwanese           |       | -0.25* | 0.46*  | 0.27*  | 0.43*  | 0.44*  |
|          | Rural               |       | -0.28* | 0.47*  | 0.28*  | 0.46*  | 0.45*  |
|          | Urban               |       | -0.24* | 0.45*  | 0.27*  | 0.41*  | 0.43*  |
|          | Non- Hispanic White |       | -0.36* | 0.40*  | 0.32*  | 0.20*  | 0.09†  |
|          | Non-Hispanic Blacks |       | -0.27* | 0.41*  | 0.32*  | 0.32*  | 0.18†  |
|          | Mexican-Americans   |       | -0.26* | 0.43*  | 0.25*  | 0.30*  | 0.15†  |
| HDL      | Taiwanese           |       |        | -0.41* | -0.08* | -0.11* | -0.12* |
|          | Rural               |       |        | -0.46* | -0.09* | -0.11* | -0.12* |
|          | Urban               |       |        | -0.38* | -0.07* | -0.09* | -0.12* |
|          | Non- Hispanic White |       |        | -0.40* | -0.18* | -0.05  | -0.10† |
|          | Non-Hispanic Blacks |       |        | -0.32* | -0.18* | -0.01  | -0.10‡ |
|          | Mexican-Americans   |       |        | -0.36* | -0.24* | -0.06  | -0.07  |
| TG       | Taiwanese           |       |        |        | 0.28*  | 0.33*  | 0.34*  |
|          | Rural               |       |        |        | 0.26*  | 0.32*  | 0.32*  |
|          | Urban               |       |        |        | 0.28*  | 0.34*  | 0.35*  |
|          | Non- Hispanic White |       |        |        | 0.26*  | 0.15*  | 0.07‡  |
|          | Non-Hispanic Blacks |       |        |        | 0.35*  | 0.22*  | 0.14‡  |
|          | Mexican-Americans   |       |        |        | 0.27*  | 0.23*  | 0.18*  |
| FPG      | Taiwanese           |       |        |        |        | 0.28*  | 0.22*  |
|          | Rural               |       |        |        |        | 0.29*  | 0.23*  |
|          | Urban               |       |        |        |        | 0.27*  | 0.21*  |
|          | Non- Hispanic White |       |        |        |        | 0.24*  | 0.02   |
|          | Non-Hispanic Blacks |       |        |        |        | 0.32*  | 0.15‡  |
|          | Mexican-Americans   |       |        |        |        | 0.33*  | 0.23*  |
| SBP      | Taiwanese           |       |        |        |        |        | 0.76*  |
|          | Rural               |       |        |        |        |        | 0.76*  |
|          | Urban               |       |        |        |        |        | 0.77*  |
|          | Non- Hispanic White |       |        |        |        |        | 0.29*  |
|          | Non-Hispanic Blacks |       |        |        |        |        | 0.54*  |
|          | Mexican-Americans   |       |        |        |        |        | 0.42*  |

All variables are log-transformed

Subjects with missing values of WC, HDL, TG, FPG, SBP or DBP < 30 mmHg and age less than 18 yrs old are deleted

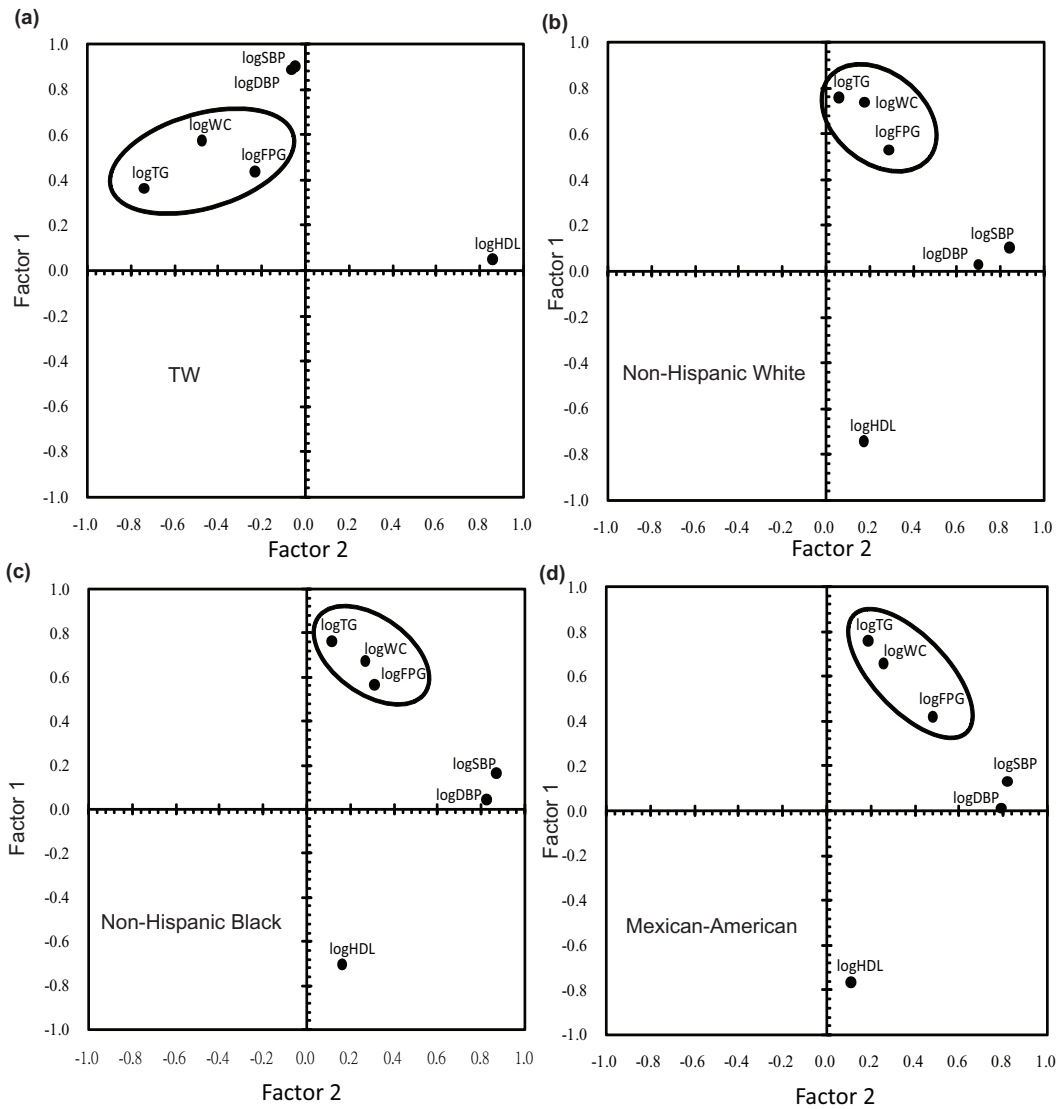
SBP: systolic blood pressure; DBP: diastolic blood pressure

\* $P < 0.001$

† $P < 0.01$

‡ $P < 0.05$



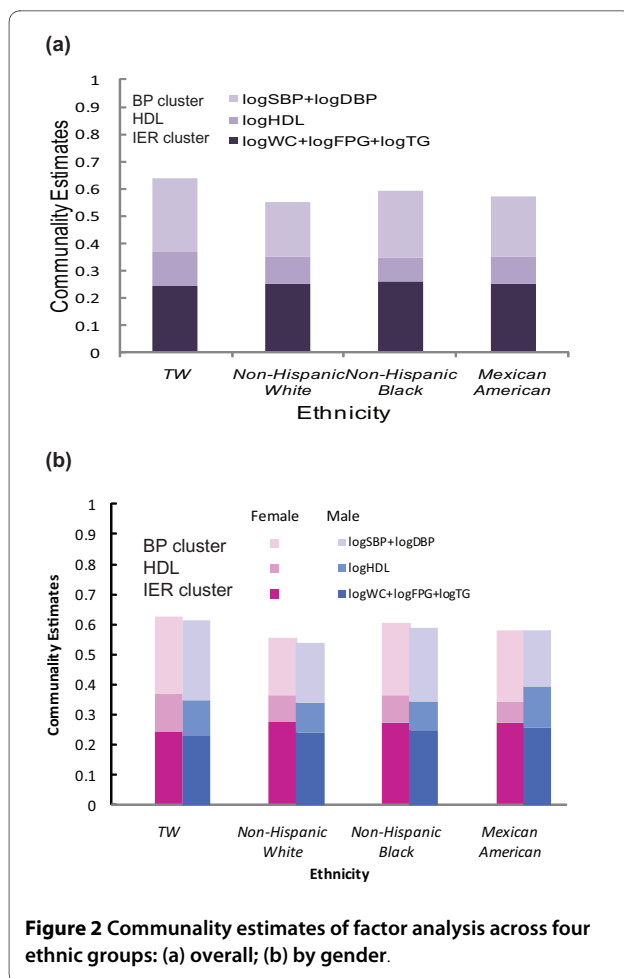


(e) Rotated estimated factor loadings for Taiwan-USA using log -transformed MetS components

| Individual Component | TW (N=5786) |              | Non-Hispanic White (N=1248) |             | Non-Hispanic Black (N=457) |             | Mexican American (N=549) |             |
|----------------------|-------------|--------------|-----------------------------|-------------|----------------------------|-------------|--------------------------|-------------|
|                      | Factor 1    | Factor 2     | Factor 1                    | Factor 2    | Factor 1                   | Factor 2    | Factor 1                 | Factor 2    |
| Log WC               | <b>0.57</b> | <b>-0.47</b> | <b>0.74</b>                 | 0.17        | <b>0.68</b>                | 0.27        | <b>0.66</b>              | 0.26        |
| Log FPG              | <b>0.43</b> | -0.23        | <b>0.53</b>                 | 0.29        | <b>0.57</b>                | 0.31        | <b>0.42</b>              | <b>0.48</b> |
| Log TG               | 0.36        | <b>-0.74</b> | <b>0.76</b>                 | 0.06        | <b>0.77</b>                | 0.12        | <b>0.76</b>              | 0.19        |
| Log HDL              | 0.05        | <b>0.86</b>  | <b>-0.74</b>                | 0.17        | <b>-0.70</b>               | 0.16        | <b>-0.77</b>             | 0.11        |
| Log SBP              | <b>0.90</b> | -0.05        | 0.10                        | <b>0.84</b> | 0.17                       | <b>0.87</b> | 0.13                     | <b>0.82</b> |
| Log DBP              | <b>0.89</b> | -0.06        | 0.03                        | <b>0.70</b> | 0.05                       | <b>0.83</b> | 0.01                     | <b>0.79</b> |

Loading of the individual components included in the respective factor (cut off=0.4).

**Figure 1** Factor loading pairs of the MetS components from PCA after rotation for different ethnic groups.



inputs and consequences in more systematic ways. We would advance the view, supported by the present enquiry into the phenomena in the US and Taiwan, that energy dysnutrition with its environmental inputs of energy intake and expenditure and its genomic determinants are at the core of the MetS. Then, depending on the disorder or disease which might be consequent upon it, the ways of rounding out the syndrome, now referred to as IER, might be several. Most usually, it is the addition of other cardiovascular risk factors, like BP and hyperLDL/HDLemia which have strengthened the cluster in regard to its prediction of macrovascular disease [26,29]; or of insulin or its sensitivity when it comes to pre-diabetes or diabetes. Increasingly, there is interest in other connections that the MetS has with other metabolic disorders like hyperuricaemia [24,33], inflammatory disorders [34], hematological disorders [35] and neoplastic disorders [8]. As a matter of fact, these various linkages may also have IER at their basis.

A somewhat similar conceptualization of the pathophysiological basis of the MetS has been advanced by others [36,37]. Despres and Lemieux considered that fat

maldistribution or 'dysfunctional adipose tissue' is of central importance in the diagnosis of MetS [36]. What we have done is, through factor analysis, found that three components of the MetS underpin this way of thinking. Moreover, we perceive this has been, at a more fundamental level, a measure of energy dysnutrition with its associated anatomical logic in the splanchnic region.

If additional components, like insulin, are included in the MetS definition, they will direct the unifying concept accordingly, in this case towards insulin resistance [38]. In this way, what might constitute the basis of the insulin resistance, such as IER, is obscured. In our analysis, we have been able to discern a phenomenon located in less than 6, and not more than 6, MetS components. Based on a Caucasian twin study of metabolic risk factors (MRF) for diabetes and cardiovascular disease, Peeters et al. argued that a focus on MRF specific loci may be a more useful approach to the understanding of gene-environment risk than the MetS as a whole [39]. We agree that few MRFs may be more instructive than many and consider that those components which are additional to IER belong to various second order MRF phenomena.

While we have not formally assessed insulin resistance, fasting glucose represents a partial measure of it, at least insofar as nocturnal gluconeogenesis and its determination by FFA flux in the splanchnic circulation is concerned. Seen this way, insulin resistance may be embraced by the broader and unifying phenomenon of IER.

#### EFA or CFA for Reconceptualisation of the Metabolic Syndrome?

We propose that IER components (WC, FPG, & TG) rather than the usual six components of MetS are the core metabolic disorder in the MetS, and have employed an exploratory factor analysis (EFA) to differentiate the clustering and inter-relationships among the 6 components of MetS. As the EFA has showed, this hypothesis is "confirmed" by the invariant (or homogeneous) pattern across four different ethnic groups. It might be asked why we did not employ a confirmatory factor analysis (CFA) to confirm our hypothesis at the beginning? It is the starting point for those authors who adopt the CFA approach [38,40,41] in attempting to identify a latent structure or factor(s) for the MetS. Our rationale was that first, since the 3 IER components were already observed to cluster from our datasets, we could explore them together with the other 3 components directly and let the data speak for themselves. Second, for those who adopted the CFA approach, the MetS is usually accepted as the underlying framework in their analysis; we did not want to do that, but rather question the validity of the present MetS to represent an integrated pathophysiological phenomenon. Ours is an attempt to break out of the circular think-

**Table 4: Proportions of variances explained by the IER and other components of the first two factors from PCA across the four ethnic groups: overall and by gender\***

**Overall**

| Community (%)      | Taiwanese (N = 5786) |                      | Non-Hispanic White (N = 1248) |                      | Non-Hispanic Black (N = 457) |                      | Mexican-American (N = 549) |                      |
|--------------------|----------------------|----------------------|-------------------------------|----------------------|------------------------------|----------------------|----------------------------|----------------------|
|                    | Absolute             | Relative             | Absolute                      | Relative             | Absolute                     | Relative             | Absolute                   | Relative             |
| logSBP+logDBP      | 26.8<br>(26.1, 27.3) | 42.0<br>(41.0, 43.0) | 20.1<br>(18.5, 21.7)          | 36.5<br>(33.7, 38.9) | 24.5<br>(22.5, 26.0)         | 41.2<br>(38.1, 44.2) | 22.0<br>(20.1, 23.6)       | 38.4<br>(35.2, 41.0) |
| logHDL             | 12.4<br>(11.7, 12.9) | 19.5<br>(18.5, 20.2) | 9.7<br>(8.6, 10.8)            | 17.7<br>(15.5, 19.5) | 8.7<br>(6.2, 10.8)           | 14.7<br>(10.7, 18.0) | 10.0<br>(8.1, 11.7)        | 17.4<br>(14.2, 20.2) |
| logWC+logFPG+logTG | 24.6<br>(24.0, 25.2) | 38.5<br>(37.9, 39.2) | 25.3<br>(24.3, 26.7)          | 45.8<br>(44.2, 47.8) | 25.9<br>(24.5, 28.1)         | 43.9<br>(41.7, 46.7) | 25.3<br>(23.5, 27.9)       | 44.2<br>(41.6, 48.1) |
| Factor1+Factor2    | 63.7<br>(63.0, 64.5) | 100                  | 55.2<br>(53.9, 57.0)          | 100                  | 59.1<br>(57.0, 61.8)         | 100                  | 57.5<br>(55.2, 59.8)       | 100                  |

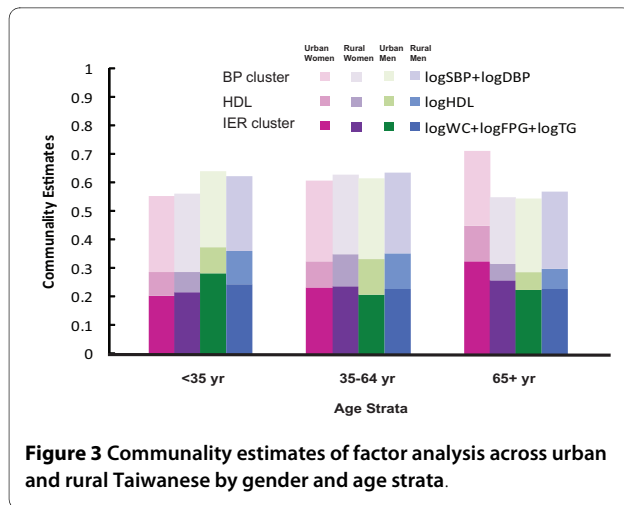
**Male**

| Community (%)      | Taiwanese (N = 2827) |                      | Non-Hispanic White (N = 602) |                      | Non-Hispanic Black (N = 226) |                      | Mexican-American (N = 266) |                      |
|--------------------|----------------------|----------------------|------------------------------|----------------------|------------------------------|----------------------|----------------------------|----------------------|
|                    | Absolute             | Relative             | Absolute                     | Relative             | Absolute                     | Relative             | Absolute                   | Relative             |
| logSBP+logDBP      | 26.6<br>(25.9, 27.3) | 43.4<br>(42.2, 44.5) | 20.1<br>(17.5, 21.8)         | 37.3<br>(32.5, 39.8) | 24.2<br>(20.3, 26.7)         | 41.3<br>(34.6, 45.0) | 18.8<br>(15.8, 21.4)       | 32.8<br>(27.7, 36.3) |
| logHDL             | 11.5<br>(10.8, 12.1) | 18.7<br>(17.6, 19.6) | 9.8<br>(7.9, 12.2)           | 18.1<br>(14.6, 22.6) | 9.5<br>(5.5, 12.8)           | 16.1<br>(9.4, 21.3)  | 13.4<br>(11.7, 14.2)       | 23.1<br>(19.9, 24.6) |
| logWC+logFPG+logTG | 23.3<br>(22.4, 24.3) | 37.9<br>(37.0, 39.0) | 24.0<br>(22.2, 27.2)         | 44.5<br>(41.6, 49.3) | 25.0<br>(23.3, 28.6)         | 42.6<br>(40.0, 47.7) | 25.8<br>(23.7, 28.9)       | 44.1<br>(41.8, 48.9) |
| Factor1+Factor2    | 61.3<br>(60.4, 62.4) | 100                  | 53.9<br>(52.3, 56.7)         | 100                  | 58.7<br>(55.6, 62.9)         | 100                  | 58.0<br>(55.1, 61.5)       | 100                  |

**Female**

| Community (%)      | Taiwanese (N = 2959) |                      | Non-Hispanic White (N = 646) |                      | Non-Hispanic Black (N = 231) |                      | Mexican-American (N = 283) |                      |
|--------------------|----------------------|----------------------|------------------------------|----------------------|------------------------------|----------------------|----------------------------|----------------------|
|                    | Absolute             | Relative             | Absolute                     | Relative             | Absolute                     | Relative             | Absolute                   | Relative             |
| logSBP+logDBP      | 25.7<br>(24.9, 26.5) | 41.2<br>(39.7, 42.5) | 19.1<br>(16.9, 21.5)         | 34.5<br>(30.4, 37.8) | 24.2<br>(22.2, 26.2)         | 39.8<br>(36.0, 43.7) | 23.7<br>(21.7, 25.3)       | 40.6<br>(37.4, 43.5) |
| logHDL             | 12.4<br>(11.2, 13.4) | 19.8<br>(17.9, 21.4) | 8.5<br>(7.0, 10.0)           | 15.4<br>(12.5, 17.8) | 9.0<br>(5.5, 11.6)           | 14.8<br>(9.4, 18.4)  | 7.2<br>(4.2, 9.8)          | 12.3<br>(7.4, 16.6)  |
| logWC+logFPG+logTG | 24.4<br>(23.3, 25.6) | 39.1<br>(37.8, 40.4) | 27.9<br>(26.5, 30.2)         | 50.2<br>(47.6, 53.3) | 27.5<br>(25.6, 30.3)         | 45.4<br>(42.9, 49.0) | 27.4<br>(24.5, 31.1)       | 47.1<br>(42.6, 52.9) |
| Factor1+Factor2    | 62.5<br>(61.4, 63.7) | 100                  | 55.6<br>(54.2, 58.3)         | 100                  | 60.7<br>(57.8, 64.7)         | 100                  | 58.2<br>(55.6, 61.6)       | 100                  |

\* The numbers in parentheses are the 95% CIs obtained from 1000 bootstrap resamplings



ing which has limited MetS research, in our view, and to search for a novel phenotype. Third, our paper attempts to re-conceptualize the MetS. It was therefore inappropriate to *manipulate* the datasets in accordance with a hypothesis and then test for it. Hence, we used an exploratory rather than a confirmatory approach.

As indicated, the conceptual IER segregates from the rest of the components of the MetS and provides a unifying capacity with which to consider inputs and consequences in more systematic ways. Greater sophistication in our hypothesis would involve reference to insinuated, but unobserved measurements (such as free fatty acid) or latent or partially captured factors (such as insulin resistance), at which point the CFA approach would be appropriate. Our findings provide a near-fundamental basis with which to take IER further through more structured hypotheses about phenotype, cellular biology and genomics. Such an enquiry would have public health and clinical relevance.

#### Relation of the IER to other MetS components

The extent to which the non-IER MetS components and their health outcome significance differ between the ethnic groups studied is of interest. We have noted in the results that, for Taiwan, the BP cluster is closer to the IER cluster than in the US ethnic populations. Furthermore, in the case of diastolic BP, where Taiwan has the highest values and prevalence, it is against a background of preference for a high Na/K molar ratio diet, and relatively high incidence of hemorrhagic stroke as featured in the annual Public Health reports. On the other hand, relatively greater North American lipoprotein cholesterol abnormalities (Tables 1 and 2) appear to accentuate the risk for atherosclerotic macrovascular disease amongst the 3 relevant ethnic groups in this study, as judged from other evidence. On the other hand, in at least some populations, the ability of the MetS to predict clinical out-

comes of diabetes and cardiovascular disease is widely divergent, as in elderly Europeans where the prediction of the former greater exceeded that of the latter [42]. This would lend support to the notion that the impact of the IER MetS components might or might not depend on the non-IER MetS components and other factors.

A more analytical study of the representative Taiwanese subjects by age, gender and locality provides further insights into the core and second order of the MetS components (Table 5 and figure 3). With regard to age, most components (WC, glucose, triglycerides, SBP and DBP), except HDL cholesterol, are more compromised in older individuals, whether men or women, or whether urban or rural. However, the core continues to behave in a coherent way (Figure 3), except in older urban women where 3 factors emerge.

#### Pathophysiology

Our segregation of the MetS into an energy-dependent core (IER) and other phenomena is consistent with emerging evidence on the regulation of cellular fuel metabolism and about mitochondrial function and disorder. In particular, the AMP-activated protein kinase cascade has been identified as a unifying system for energy control by Carling and others [43]. It also is involved in insulin signaling [44] and senses glycogen stores [45]. Another possibility which has been proposed by Bhopal and Rafnsson is that mitochondrial efficiency might explain susceptibility to adiposity and the metabolic syndrome, which is to say that ATP and heat generation might be involved, perhaps through mitochondrial DNA mutations characteristic of certain populations [46]. Since, in absolute values, our IER components are lower in Taiwanese than in any of the US populations, this is a difference which could represent mitochondrial efficiency differences. Aside from the likely pivotal role of exercise and energy intake in the modulation of IER as for the MetS itself [46], it may offer new approaches in the treatment of metabolic disorders [47]. Linked to this will be the integrity of mitochondrial energy metabolism and function [48,49].

#### Health status of subjects

In both the US and Taiwan, the study populations were community-based and representative, not selected for health status and not institutionalised in this cross-sectional study. Their health characteristics are shown in part, by reported behaviours (eg tobacco smoking) and various risk factors, by the medication history, by anthropometry to detect body fatness and its distribution and by virtue of the components of the MetS itself. Although physical activity and alcohol intake were recorded, the frequency of missing values in the US ethnic groups precluded their reliable evaluation.

**Table 5: Age-specific comparisons of the MetS components of Taiwanese with different urbanization status**

| Variables                        | < 35 yr         |                | 35-64 yr        |                 | 65 + yr        |                |
|----------------------------------|-----------------|----------------|-----------------|-----------------|----------------|----------------|
|                                  | Urban           | Rural          | Urban           | Rural           | Urban          | Rural          |
| <b>All</b>                       | <b>N = 1246</b> | <b>N = 769</b> | <b>N = 2056</b> | <b>N = 1112</b> | <b>N = 348</b> | <b>N = 255</b> |
| Age (years)                      | 26.0 ± 5.2      | 26.2 ± 5.1     | 47.1 ± 7.8      | 47.6 ± 8.3      | 72.3 ± 5.3     | 72.7 ± 5.7     |
| WC (cm)                          | 75.3 ± 11.0     | 75.4 ± 11.0    | 80.8 ± 10.8     | 81.9 ± 10.6 *   | 85.5 ± 9.9     | 85.0 ± 9.5     |
| Glucose (mg/dl)                  | 85.3 ± 13.4     | 87.0 ± 12.5 *  | 95.1 ± 28.5     | 99.3 ± 33.9 *   | 102.5 ± 33.7   | 104.6 ± 35.5   |
| Triglycerides(mg/dl)             | 99.9 ± 59.5     | 111.2 ± 70.7 * | 133.7 ± 86.8    | 142.6 ± 100.3 * | 142.4 ± 77.2   | 149.1 ± 92.3   |
| HDL (mg/dl)                      | 54.7 ± 12.6     | 53.4 ± 13.3    | 56.9 ± 15.8     | 55.4 ± 15.4 *   | 56.1 ± 15.8    | 54.0 ± 15.9    |
| LDL (mg/dl)                      | 102.6 ± 23.4    | 107.8 ± 24.5 * | 120.0 ± 26.3    | 120.7 ± 26.6    | 126.3 ± 27.4   | 123.4 ± 28.3   |
| Total Cholesterol(mg/dl)         | 166.3 ± 31.5    | 171.2 ± 32.6 * | 190.3 ± 36.3    | 190.1 ± 36.1    | 196.5 ± 36.9   | 191.4 ± 39.5   |
| SBP (mm Hg)                      | 105.7 ± 11.8    | 107.8 ± 12.3 * | 115.3 ± 16.9    | 118.6 ± 17.2 *  | 133.2 ± 18.7   | 133.1 ± 18.3   |
| DBP (mm Hg)                      | 70.0 ± 9.4      | 71.0 ± 9.6 *   | 76.7 ± 11.4     | 77.6 ± 11.5 *   | 78.1 ± 10.8    | 78.3 ± 10.9    |
| BMI (kg/m <sup>2</sup> )         | 21.9 ± 3.6      | 22.3 ± 3.8 *   | 23.7 ± 3.3      | 24.0 ± 3.6 *    | 23.8 ± 3.2     | 23.4 ± 3.1     |
| Weight (Kg)                      | 60.3 ± 12.5     | 60.4 ± 12.8    | 62.2 ± 11.1     | 62.8 ± 11.3     | 61.6 ± 10.0    | 60.5 ± 9.7     |
| Height (cm)                      | 165.4 ± 8.1     | 164.2 ± 8.0 *  | 161.7 ± 7.7     | 161.4 ± 7.6     | 160.8 ± 8.4    | 160.7 ± 7.9    |
| HT drug (%)                      | 0.2             | 0              | 7.6             | 7.8             | 32.8           | 33.7           |
| DM drug (%)                      | 0.2             | 0              | 3.4             | 3.8             | 12.1           | 11.4           |
| Lipid drug (%)                   | 0.08            | 0.13           | 2.0             | 1.5             | 5.7            | 6.7            |
| Current smokers <sup>‡</sup> (%) | 16.9            | 17.8           | 20.2            | 24.1 *          | 17.8           | 25.9 *         |
| <b>Males</b>                     | <b>N = 611</b>  | <b>N = 360</b> | <b>N = 942</b>  | <b>N = 559</b>  | <b>N = 193</b> | <b>N = 162</b> |
| Age (years)                      | 25.7 ± 5.2      | 25.9 ± 5.2     | 47.2 ± 7.8      | 47.7 ± 8.5      | 72.6 ± 5.1     | 72.7 ± 5.4     |
| WC (cm)                          | 80.5 ± 10.9     | 80.7 ± 10.9    | 86.1 ± 9.9      | 86.2 ± 9.6      | 86.9 ± 10.2    | 86.6 ± 8.8     |
| Glucose (mg/dl)                  | 86.8 ± 15.5     | 87.5 ± 14.6    | 96.6 ± 32.3     | 100.2 ± 34.0    | 99.5 ± 27.4    | 103.8 ± 35.8   |
| Triglycerides(mg/dl)             | 114.1 ± 68.0    | 132.5 ± 85.6 * | 156.1 ± 98.9    | 164.4 ± 114.7 * | 135.6 ± 72.0   | 148.4 ± 92.5   |
| HDL (mg/dl)                      | 51.5 ± 12.3     | 49.5 ± 13.0 *  | 52.2 ± 15.4     | 51.2 ± 15.5     | 53.4 ± 15.4    | 51.0 ± 15.6    |
| LDL (mg/dl)                      | 106.1 ± 25.5    | 109.3 ± 25.1   | 122.4 ± 25.4    | 121.2 ± 26.2    | 123.4 ± 26.3   | 121.2 ± 27.5   |
| Total Cholesterol (mg/dl)        | 168.1 ± 34.4    | 170.8 ± 33.0   | 190.5 ± 34.2    | 188.7 ± 36.1    | 189.9 ± 34.1   | 186.0 ± 38.7   |
| SBP (mm Hg)                      | 111.5 ± 11.1    | 114.1 ± 11.3 * | 118.4 ± 16.3    | 121.2 ± 16.7 *  | 132.2 ± 16.6   | 133.3 ± 18.9   |
| DBP (mm Hg)                      | 73.9 ± 8.9      | 74.9 ± 9.4     | 80.0 ± 11.1     | 80.2 ± 11.5     | 78.2 ± 10.6    | 79.1 ± 11.4    |
| BMI (kg/m <sup>2</sup> )         | 22.9 ± 3.7      | 23.4 ± 3.9 *   | 24.3 ± 3.2      | 24.4 ± 3.1      | 23.3 ± 2.9     | 23.4 ± 2.8     |
| Weight (Kg)                      | 67.5 ± 11.9     | 68.1 ± 12.0    | 68.5 ± 10.1     | 67.9 ± 10.2     | 64.6 ± 9.9     | 63.7 ± 8.3     |
| Height (cm)                      | 171.5 ± 5.9     | 170.5 ± 5.7 *  | 167.7 ± 5.7     | 166.8 ± 5.7 *   | 166.3 ± 5.9    | 165.0 ± 5.3 *  |
| HT drug (%)                      | 0.3             | 0              | 7.0             | 7.2             | 33.7           | 36.4           |
| DM drug (%)                      | 0.3             | 0              | 3.6             | 4.3             | 13.5           | 9.3            |
| Lipid drug (%)                   | 0.2             | 0.3            | 2.0             | 1.3             | 5.2            | 5.6            |
| Current smokers <sup>‡</sup> (%) | 31.4            | 35.8           | 40.3            | 46.0            | 30.6           | 38.3           |

**Table 5: Age-specific comparisons of the MetS components of Taiwanese with different urbanization status (Continued)**

| <b>Females</b>            | <b>N = 635</b> | <b>N = 409</b> | <b>N = 1114</b> | <b>N = 553</b> | <b>N = 155</b> | <b>N = 93</b> |
|---------------------------|----------------|----------------|-----------------|----------------|----------------|---------------|
| Age (years)               | 26.2 ± 5.2     | 26.4 ± 5.1     | 47.1 ± 7.9      | 47.5 ± 8.1     | 71.8 ± 5.6     | 72.8 ± 6.2    |
| WC (cm)                   | 70.3 ± 8.7     | 70.7 ± 8.8     | 76.3 ± 9.4      | 77.5 ± 9.8 *   | 83.6 ± 9.2     | 82.2 ± 10.1   |
| Glucose (mg/dl)           | 83.9 ± 10.7    | 86.5 ± 10.3 *  | 93.8 ± 24.7     | 98.4 ± 33.7 *  | 106.2 ± 40.0   | 105.8 ± 35.0  |
| Triglycerides (mg/dl)     | 86.3 ± 46.0    | 92.5 ± 47.0 *  | 114.8 ± 69.8    | 120.4 ± 77.1   | 150.8 ± 82.7   | 150.4 ± 92.3  |
| HDL (mg/dl)               | 57.7 ± 12.1    | 56.8 ± 12.7 *  | 60.9 ± 14.9     | 59.6 ± 14.1    | 59.4 ± 15.7    | 59.3 ± 15.0   |
| LDL (mg/dl)               | 99.3 ± 20.7    | 106.5 ± 24.0   | 118.0 ± 26.9    | 120.3 ± 27.0   | 129.9 ± 28.5   | 127.2 ± 29.3  |
| Total Cholesterol (mg/dl) | 164.5 ± 28.3   | 171.5 ± 32.3 * | 190.2 ± 37.9    | 191.6 ± 36.1   | 204.6 ± 38.8   | 200.9 ± 39.4  |
| SBP (mm Hg)               | 100.1 ± 9.6    | 102.2 ± 10.3 * | 112.7 ± 17.1    | 115.9 ± 17.3 * | 134.4 ± 21.0   | 132.7 ± 17.5  |
| DBP (mm Hg)               | 66.3 ± 8.2     | 67.6 ± 8.4 *   | 73.8 ± 10.8     | 75.0 ± 10.8 *  | 77.8 ± 11.0    | 76.8 ± 9.7    |
| BMI (kg/m <sup>2</sup> )  | 21.0 ± 3.2     | 21.3 ± 3.6     | 23.2 ± 3.4      | 23.7 ± 4.0 *   | 24.4 ± 3.5     | 23.5 ± 3.7 *  |
| Weight (Kg)               | 53.4 ± 8.6     | 53.6 ± 9.2     | 56.8 ± 8.7      | 57.6 ± 9.9     | 57.8 ± 8.6     | 55.0 ± 9.5 *  |
| Height (cm)               | 159.5 ± 5.0    | 158.5 ± 4.9 *  | 156.6 ± 5.0     | 155.9 ± 4.8 *  | 154.0 ± 5.6    | 153.0 ± 5.6   |
| HT drug (%)               | 0              | 0              | 8.2             | 8.5            | 31.6           | 29.0          |
| DM drug (%)               | 0              | 0              | 3.2             | 3.3            | 10.3           | 15.1          |
| Lipid drug (%)            | 0              | 0              | 2.0             | 1.8            | 6.5            | 8.6           |
| Current smokers † (%)     | 3.0            | 2.0            | 3.1             | 2.0            | 1.9            | 4.3           |

† At significant level  $\alpha = 0.05$ ,  $p$ -value < 0.05 (\*) was used for two-sample  $t$ -test were used for comparing means between urban and rural Taiwanese in each gender and age-specific strata.

‡ Current smokers were considered to subjects who have a life-time smoking experience of  $\geq 100$  cigarettes and currently smoke

The interpretation of the medication use is difficult. First, it is some confirmation of a risk or disease state eg hypertension, hyperlipidaemia or diabetes. Second, it means the observed MetS components will have been somewhat corrected depending on compliance, affordability, access to health care and public health education. In these respects the US and Taiwan are strikingly different, since Taiwan has a universal health insurance scheme (which includes pharmaceuticals), with 99% of the population covered, and the US does not. Nevertheless, in both places, remoteness, culture, education, socio-economic circumstances and other equity issues are likely to have influenced MetS component profiles. For example, our data showed age and gender might have effects on MetS, especially on urban older women. Notwithstanding these considerations, the MetS core is robust by setting, health status and where other differences will be inevitable.

#### Public health and clinical implications

If the MetS can be understood in clearer etiologic and pathogenetic terms, it will pave the way for more rational and supportable public health preventive strategies and clinical interventions.

It remains unclear as to how important the MetS is in the prediction of morbidity and mortality in different clinical settings and the understanding of IER may clarify this situation. From the public health point of view, the "physical activity transition" and its role in the genesis of

MRFs as proposed by Katzmarzyk and Mason may operate principally through the IER pathway [46].

#### Conclusions

Energy dysnutrition is a fundamental problem at all stages of economic development. It may operate at different levels from the environmental-human biology interface to every human cell, in turn to determine the likelihood of health and well-being. However, in public health and clinical practice, its measurement is available, not only by way of intake and expenditure with difficulty, but also by way of waist (or abdominal) circumference for abdominal fat stores and by fasting plasma glucose and triglycerides as fuels generated in the splanchnic circulation and region. These 3 components (IER) of the MetS cluster consistently across several ethnic groups in different localities; nevertheless, the phenomenon is not as pronounced in Taiwan as the US and its persistence into later life is less evident in urban Taiwanese women. The IER cluster allows a step-wise first (core) and then second order approach to the understanding and application of the present form of the MetS, in relation to cardiovascular disease. This also allows for other variants of the MetS, more relevant, for example, to inflammatory or neoplastic disease, to be developed as second order phenomena. We are encouraged to take advantage of these findings in cohort and intervention studies, especially

those which include genetic markers for energy metabolism, fat distribution, and various clinical outcomes.

#### Abbreviations

AHA: American Heart Association criteria for metabolic syndrome in 2004; BMI: Body Mass Indices; BPs: systolic and diastolic blood pressures; CFA: confirmatory factor analysis; CI: confidence interval; DBP: diastolic blood pressure; EFA: Exploratory factor analysis; FFA: free fatty acids; FPG: fasting plasma glucose; HDL: high-density lipoprotein; IDF: International Diabetes Federation criteria for metabolic syndrome; IER: Impaired Energy Regulation; LDL: low-density lipoprotein; MRF: metabolic risk factors; MetS: metabolic syndrome; NCEP-ATP III: National Cholesterol Education Program-Adult Treatment Panel III criteria for metabolic syndrome; NHANES: National Health and Nutrition Examination Survey; NHIS: National Health Interview Survey; NHLB: National Heart Lung and Blood Institute; PC: principal components; PCA: PC analysis; PPS: probability proportional to their size; SBP: systolic blood pressure; TG: fasting triglycerides; TwSHHH: Taiwan Three High Prevalence Survey on Hypertension, Hyperglycemia, and Hyperlipidemia; VLDL: very low density lipoprotein; WC: waist circumference.

#### Competing interests

The authors declare that they have no competing interests.

#### Authors' contributions

MLW, HYC, CCC and CCH were involved in the conception and design. WCC, WSW and CCC were involved in the analysis and interpretation of the data. MLW, HYC, CCC and CCH drafted the article. MLW, HYC and CAH were responsible for critical revision of the article for intellectual content. MLW, HYC, CCC, CCH, WCC, WSW and CAH gave final approval of the article. HYC, CCC, WCC, and WSW provided statistical expertise. HYC, WCC and WSW were involved in the collection, where relevant, and assembly of the data. All authors read and approved the final manuscript.

#### Acknowledgements

Acknowledgements: The authors would like to thank National Center for Health Statistics (NCHS) and National Health Research Institutes (NHRI) in Taiwan for access to data bases. We especially thank Dr. I-Shou Chang, and Dr. Yen-Feng Chiu who contributed to this study for their help and technical support.

Sources of financial support: None

#### Author Details

<sup>1</sup>Division of Health Policy Research and Development, Institute of Population Health Sciences, National Health Research Institutes, No. 35, Keyan Road, Zhunan, Miaoli County 35053, Taiwan and <sup>2</sup>Division of Biostatistics and Bioinformatics, Institute of Population Health Sciences, National Health Research Institutes, No. 35, Keyan Road, Zhunan, Miaoli County 35053, Taiwan

Received: 18 December 2009 Accepted: 1 June 2010

Published: 1 June 2010

#### References

1. The IDF consensus worldwide definition of the metabolic syndrome [[http://www.idf.org/webdata/docs/MetSyndrome\\_FINAL.pdf](http://www.idf.org/webdata/docs/MetSyndrome_FINAL.pdf)]
2. Alberti KG, Zimmet P, Shaw J: **The metabolic syndrome--a new worldwide definition.** *Lancet* 2005, **366**(9491):1059-1062.
3. Grundy SM, Brewer HB Jr, Cleeman JJ, Smith SC Jr, Lenfant C: **Definition of metabolic syndrome: report of the National Heart, Lung, and Blood Institute/American Heart Association conference on scientific issues related to definition.** *Arterioscler Thromb Vasc Biol* 2004, **24**(2):e13-18.
4. **Third Report of the National Cholesterol Education Program (NCEP) Expert Panel on Detection, Evaluation, and Treatment of High Blood Cholesterol in Adults (Adult Treatment Panel III) final report.** *Circulation* 2002, **106**(25):3143-3421.
5. Yang FY, Wahlqvist ML, Lee MS: **Body mass index (BMI) as a major factor in the incidence of the metabolic syndrome and its constituents in unaffected Taiwanese from 1998 to 2002.** *Asia Pac J Clin Nutr* 2008, **17**(2):339-351.
6. Sakurai M, Takamura T, Miura K, Kaneko S, Nakagawa H: **Middle-aged Japanese women are resistant to obesity-related metabolic abnormalities.** *Metabolism* 2009, **58**(4):456-459.
7. Wahlqvist ML, Kaijser L, Lassers BW: **Fatty acid as determinant of myocardial substrate and oxygen metabolism in men at rest and during prolonged exercise.** *Acta Medica Scandinavica* 1973, **193**:89-96.
8. Opie LH: **Metabolic syndrome.** *Circulation* 2007, **115**:e32-e35.
9. Bjorntorp P: **Do stress reactions cause abdominal obesity and comorbidities?** *Obesity Reviews* 2001, **2**(2):73-86.
10. Wahren J, Ekberg K: **Splanchnic regulation of glucose production.** *Annu Rev Nutr* 2007, **27**:329-345.
11. Boberg J, Carlson LA, Freyschuss U, Lassers BW, Wahlqvist ML: **Splanchnic secretion rates of plasma triglycerides and total and splanchnic turnover of plasma free fatty acids in men with normo- and hypertriglyceridaemia.** *Eur J Clin Invest* 1972, **2**(6):454-466.
12. Wahlqvist ML: **The metabolic syndrome: a cancer prevention opportunity?** *The 39th International Symposium of the Princess Takamatsu Cancer Research Fund: Metabolic Syndrome: Carcinogenesis and Prevention: 2009; Tokyo, Japan 2009*:182-191.
13. Lassers BW, Kaijser L, Wahlqvist ML, Carlson LA: **Relationship in man between plasma free fatty acids and myocardial metabolism of carbohydrate substrates.** *Lancet* 1971, **2**:448-450.
14. Moore SC: **Waist versus weight: which matters more for mortality?** *Am J Clin Nutr* 2009, **89**(4):1003-1004.
15. Flegal KM, Graubard BI: **Estimates of excess deaths associated with body mass index and other anthropometric variables.** *Am J Clin Nutr* 2009, **89**(4):1213-1219.
16. Kuk JL, Katzmarzyk PT, Nichaman MZ, Church TS, Blair SN, Ross R: **Visceral fat is an independent predictor of all-cause mortality in men.** *Obesity* 2006, **14**(2):336-341.
17. Rosmond R: **Role of stress in the pathogenesis of the metabolic syndrome.** *Psychoneuroendocrinology* 2005, **30**:1-10.
18. Malan L, Malan NT, Wissing MP, Seedat YK: **Coping with urbanization: a cardiometabolic risk? The THUSA study.** *Biol Psychol* 2008, **79**(3):323-328.
19. Alam I, Lewis K, Stephens JW, Baxter JN: **Obesity, metabolic syndrome and sleep apnoea: all pro-inflammatory states.** *Obes Rev* 2007, **8**(2):119-127.
20. Ritchie SA, Connell JM: **The link between abdominal obesity, metabolic syndrome and cardiovascular disease.** *Nutr Metab Cardiovasc Dis* 2007, **17**(4):319-326.
21. Steptoe A, Owen N, Kunz-Ebrecht SR, Brydon L: **Loneliness and neuroendocrine, cardiovascular, and inflammatory stress responses in middle-aged men and women.** *Psychoneuroendocrinology* 2004, **29**:593-611.
22. **NHANES Home page** [<http://www.cdc.gov/nchs/nhanes.htm>]
23. Su TC, Bai CH, Chang HY, You SL, Chien KL, Chen MF, Chen HJ, Pan WH, Tseng CH, Cheng SH, Hwang BS, Hwang LC, Chen CJ: **Evidence for improved control of hypertension in Taiwan: 1993-2002.** *J Hypertens* 2008, **26**(3):600-606.
24. Reimann M, Schutte AE, Malan L, Huisman HW, Malan NT: **Hyperuricaemia is an independent factor for the metabolic syndrome in a sub-Saharan African population: a factor analysis.** *Atherosclerosis* 2008, **197**(2):638-645.
25. Scuteri A, Najjar SS, Muller DC, Andres R, Hougaku H, Metter EJ, Lakatta EG: **Metabolic syndrome amplifies the age-associated increases in vascular thickness and stiffness.** *J Am Coll Cardio* 2004, **43**(8):1388-1395.
26. Shih YT, Hung YT, Chang HY, Liu JP, Lin HS, Chang MC, Chang FC, Hsiung CA, Wu SL: **The design, contents, operation and the characteristics of the respondents of the 2001 National Health Interview Survey in Taiwan.** *TJPH* 2003, **22**(6):419-430.
27. Johnson RA, Wichern DW: **Applied Multivariate Statistical Analysis.** 4th edition. Prentice Hall, Inc; 1998.
28. Efron B, Tibshirani RJ: **An Introduction to the Bootstrap.** Chapman & Hall/CRC; 1993.
29. Öhrvik J, Hedberg P, Jonason T, Lonnberg I, Nilsson G: **Factor analysis of the individual components of the metabolic syndrome among elderly identifies two factors with different survival patterns--a population-based study.** *Metab Syndr Relat Disord* 2009, **7**(3):171-177.
30. Wijndaele K, Beunen G, Duvigneaud N, Matton L, Duquet W, Thomis M, Lefevre J, Philippaerts RM: **A continuous metabolic syndrome risk score: utility for epidemiological analyses.** *Diabetes Care* 2006, **29**(10):2329.
31. Wijndaele K, Duvigneaud N, Matton L, Duquet W, Delecluse C, Thomis M, Beunen G, Lefevre J, Philippaerts RM: **Sedentary behaviour, physical**

- activity and a continuous metabolic syndrome risk score in adults. *Eur J Clin Nutr* 2009, **63**(3):421-429.
32. Alberti KG, Eckel RH, Grundy SM, Zimmet PZ, Cleeman JI, Donato KA, Fruchart JC, James WP, Loria CM, Smith SC Jr: **Harmonizing the metabolic syndrome: a joint interim statement of the International Diabetes Federation Task Force on Epidemiology and Prevention; National Heart, Lung, and Blood Institute; American Heart Association; World Heart Federation; International Atherosclerosis Society; and International Association for the Study of Obesity.** *Circulation* 2009, **120**(16):1640-1645.
  33. Lee MS, Wahlqvist ML, Yu HL, Pan WH: **Hyperuricemia and metabolic syndrome in Taiwanese children.** *Asia Pac J Clin Nutr* 2007, **16**(52):594-600.
  34. Gustafson B, Hammarstedt A, Andersson CX, Smith U: **Inflamed adipose tissue: a culprit underlying the metabolic syndrome and atherosclerosis.** *Arterioscler Thromb Vasc Biol* 2007, **27**(11):2276-2283.
  35. Shi Z, Hu X, Yuan B, Hu G, Pan X, Holmboe-Ottesen G: **Coexistence of anaemia and the metabolic syndrome in adults in Jiangsu, China.** *Asia Pac J Clin Nutr* 2008, **17**(3):505-513.
  36. Despres JP, Lemieux I: **Abdominal obesity and metabolic syndrome.** *Nature* 2006, **444**(7121):881-887.
  37. Lakka HM, Laaksonen DE, Lakka TA, Niskanen LK, Kumpusalo E, Tuomilehto J, Salonen JT: **The metabolic syndrome and total and cardiovascular disease mortality in middle-aged men.** *JAMA* 2002, **288**(21):2709-2716.
  38. Shen BJ, Goldberg RB, Llabre MM, Schneiderman N: **Is the factor structure of the metabolic syndrome comparable between men and women and across three ethnic groups: the Miami Community Health Study.** *Ann Epidemiol* 2006, **16**(2):131-137.
  39. Peeters MW, Thomis MA, Loos RJ, Derom CA, Fagard R, Vlietinck RF, Beunen GP: **Clustering of metabolic risk factors in young adults: genes and environment.** *Atherosclerosis* 2008, **200**(1):168-176.
  40. Lawlor DA, Ebrahim S, May M, Smith GD: **(Mis)use of factor analysis in the study of insulin resistance syndrome.** *Am J Epidemiol* 2004, **159**(11):1013-1018.
  41. Li C, Ford ES: **Is there a single underlying factor for the metabolic syndrome in adolescents? A confirmatory factor analysis.** *Diabetes Care* 2007, **30**(6):1556-1561.
  42. Sattar N, McConnachie A, Shaper AG, Blauw GJ, Buckley BM, de Craen AJ, Ford I, Forouhi NG, Freeman DJ, Jukema JW, Lennon L, Macfarlane PW, Murphy MB, Packard CJ, Stott DJ, Westendorp RG, Whincup PH, Jm S, Wannamethee SG: **Can metabolic syndrome usefully predict cardiovascular disease and diabetes? Outcome data from two prospective studies.** *Lancet* 2008, **371**(9628):1927-1935.
  43. Carling D: **The AMP-activated protein kinase cascade--a unifying system for energy control.** *Trends Biochem Sci* 2004, **29**(1):18-24.
  44. Towler MC, Hardie D: **AMP-activated protein kinase in metabolic control and insulin signaling.** *Cell Mol Life Sci* 2008, **65**:3737-3755.
  45. McBride A, Ghilagaber S, Nikolaev A, Hardie DG: **The glycogen-binding domain on the AMPK beta subunit allows the kinase to act as a glycogen sensor.** *Cell Metab* 2009, **9**(1):23-34.
  46. Katzmarzyk PT, Mason C: **The physical activity transition.** *J Phys Act Health* 2009, **6**(3):269-280.
  47. Viollet B, Mounier R, Leclerc J, Yazigi A, Foretz M, Andreelli F: **Targeting AMP-activated protein kinase as a novel therapeutic approach for the treatment of metabolic disorders.** *Diabetes Metab* 2007, **33**(6):395-402.
  48. Lin LY, Kuo HK, Li HY, Hwang JJ, Lin JW: **Confirming a biological pathway in the metabolic syndrome--insight from the NHANES 1999-2002.** *Obesity* 2008, **16**(12):2676-2681.
  49. Wortmann SB, Zweers-van Essen H, Rodenburg RJ, van den Heuvel LP, de Vries MC, Rasmussen-Conrad E, Smeitink JA, Morava E: **Mitochondrial energy production correlates with the age-related BMI.** *Pediatr Res* 2009, **65**(1):103-108.

#### Pre-publication history

The pre-publication history for this paper can be accessed here:  
<http://www.biomedcentral.com/1472-6823/10/11/prepub>

doi: 10.1186/1472-6823-10-11

**Cite this article as:** Wahlqvist et al., Is impaired energy regulation the core of the metabolic syndrome in various ethnic groups of the USA and Taiwan? *BMC Endocrine Disorders* 2010, **10**:11

**Submit your next manuscript to BioMed Central and take full advantage of:**

- Convenient online submission
- Thorough peer review
- No space constraints or color figure charges
- Immediate publication on acceptance
- Inclusion in PubMed, CAS, Scopus and Google Scholar
- Research which is freely available for redistribution

Submit your manuscript at  
[www.biomedcentral.com/submit](http://www.biomedcentral.com/submit)

